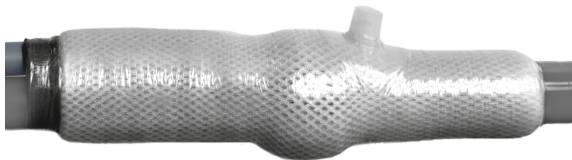


FiloSlim 3D Gauze Mat



A 3D Gauze is used in the construction FiloSlim injection joints. Two layers of the 3D gauze create the correct insulation space for conductive parts in the joint.

The joint's high elasticity gives the joint an elegant and smooth shape. The FiloSlim 3D gauze sheet's open structure enables an even distribution and flow of resin in the FiloSlim injection joint.

Rasgos

- Filling the injection joint is easy thanks to the open structure of the 3D gauze.
- You save time as only 2 sheets are used to create the correct insulation distance.
- You cut the required length from the roll.
- Standard dimension gauze sheets for cable joints are available on request.
- During taping, the gauze compresses to the cable joint contours.

Especificaciones

Materiaal	100% monofil polyester
Dikte gaasweefsel	± 5mm
Oppervlakte gewicht	± 650gr/m ²
Indrukweerstand (DIN EN ISO 3386-1)	60 kPA
Benodigde kracht voor een 100% rek in de breedte	50N
Rek in lengterichting bij 50N	± 5%

Productos

Art.nr.	Product Naam	Unidad de embalaje
80525200R	FiloSlim 3D GAUZE MAT 360mm x 200mm	225 pcs/carton
80526350R	FiloSlim 3D GAUZE MAT 600mm x 350mm	75 pcs/carton
80526	FiloSlim 3D GAUZE MAT 600mmx10m	1 pcs/carton